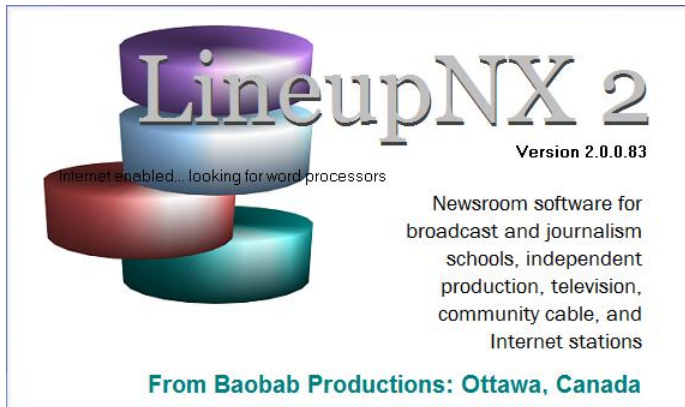


# LineupNX 2 release note 20\_007

---

## First impressions count

Each time you run LineupNX, you will first see a splash screen similar to the one shown below. Sometimes it takes a few seconds to disappear and bring up the login screen



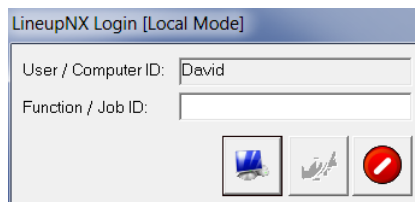
While the splash screen is visible, LineupNX is checking to see if your computer is connected to the internet, finding out if you have any of the supported word processing programs installed and is checking to see if your shared network file storage location is available for use (if it has been setup in the program preferences). If the folder is not available or if it has not been setup (see the Installation Guide), only the Local Mode button will be enabled for you.

When that process is complete LineupNX displays a login screen similar to the one shown. It is not so much for security as it is to let LineupNX set itself up to meet specific user needs. The User / Computer ID field should already be filled-in. You need to supply a Function / Job ID to start the program.

## Start with "admin"

Here are the ids that LineupNX recognizes:

- admin
- editor
- reporter
- technical
- producer
- director
- production
- showpa
- anchor
- altdit



These logins and what features of the program they give access to are described in the included help file which you can access from the main LineupNX screen, once the program is running.

**The first time you run LineupNX, we suggest you use *admin* as the Function / Job ID for the first user.**